



zFab





SUSTAINABLE
AFFORDABLE
PRACTICAL
ALL IN ONE PACKAGE

A new way of thinking, for the design and environmentally conscious owner, about the construction and delivery of prefabricated dwelling/accessory units.

Our quality designed homes are manufactured, delivered, and installed on your site. This minimizes cost, waste and increases efficiency and its delivery.

From purchasing to moving into your home, the zFab process is designed to be as seamless as possible. You can enjoy your zFab in as little as four months.

Each zFab is manufactured with an option for LEED certification with net zero or net positive energy. In addition, a solar panel system and a rain catching tank are sustainable options that can be incorporated with your new home.

ENJOY IN

4

MONTHS

SUSTAINABLE

5+

OPTIONS

OPTION FOR
LEED
CERTIFICATION
WITH
NET ZERO
OR NET
POSITIVE
ENERGY

THE zFab HOUSING DELIVERY MODEL



PURCHASE PROCESS

The purchase process is quick and seamless. Provide us your information, the zFab model that interests you, any optional features you want to include and the destination of the zFab. Brett Zamore Design (bZD) can then begin to establish a feasibility of delivery to your site with a total cost structure. A signed contract with initial deposit will be requested in order to move forward with site design and construction of the zFab. We will support you from the beginning to completion.



SITE DESIGN + PERMITTING (if requested)

Locating the zFab on your site is critical to the success of your project. We can prepare a site analysis to make sure your home is located in the most optimum location. Local jurisdictions may require obtaining permit before construction. We can help prepare required drawings and paperwork for permitting approval.

MANUFACTURING

Two options of construction are utilized in building the units in order to minimize cost, waste and increase efficiency and delivery. The first and preferred process is a prefabricated unit that is factory-built and delivered to site. The second is a site built structure (used due to problems of permitting and/or delivery) whose construction is made from a kit of parts.



SITE PREPARATION + FOUNDATION

Prior to the zFab delivery, the site needs to be cleared for accessibility and ease of delivery. bZD will also make sure all the utilities are in place and the foundation is installed to the engineer's specification.

SHIPPING

The zFab unit will be wrapped for protection at the factory and shipped from the manufacturer to your site. Based on location, cost and time on shipping will vary.



SITE INSTALLATION

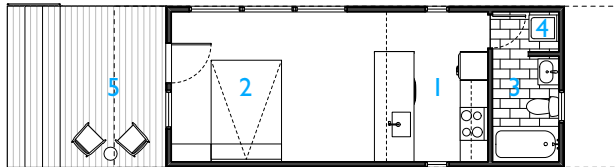
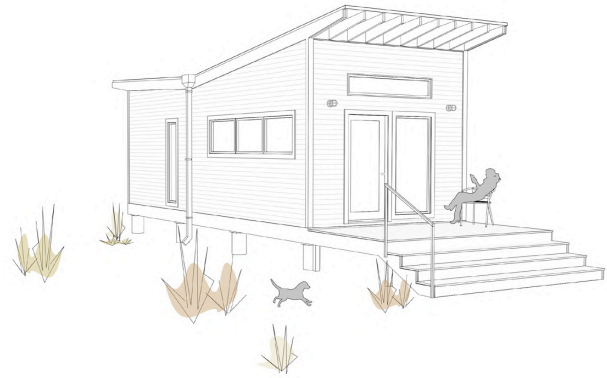
The zFab is connected to its foundation and all utility connections are made. Electrical, plumbing and mechanical are ready to go. Optional porches are built depending on the client's need. Site work and landscaping to be completed by others. Options: Solar panels and also a rain collection tank.



MOVE IN/COMPLETION

Now the zFab housing is move-in ready!

zFab 00 Butterfly



0 3 6 FT

1. Kitchen 2. Living 3. Bathroom 4. Laundry 5. Deck

SQUARE FOOTAGE	360 sf [12'x30'] + 98 sf deck
CONSTRUCTION COST	Quote Upon Request *1
SHIPPING	TBD *2
DRAWING SET PRICE	\$2,000 *3

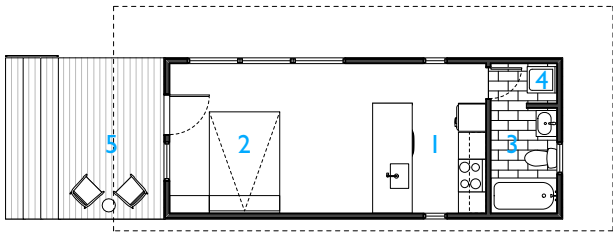
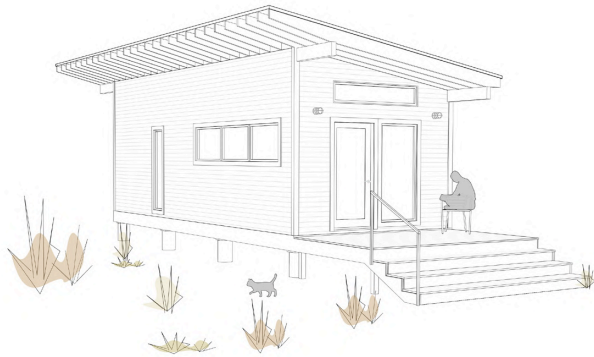
*1. Site preparation, foundation, deck installation, site utilities, mechanical equipment, MEP connections & landscaping to be additional. Pricing by local general contractor.

*2. Costs vary due to shipping distance and site accessibility.

*3. Estimated cost of drawing set needed for site construction.

Note: Alterations are available upon request





0 3 6 FT

1. Kitchen 2. Living 3. Bathroom 4. Laundry 5. Deck

SQUARE FOOTAGE 360 sf [12'x30'] + 98 sf deck
CONSTRUCTION COST Quote Upon Request *1
SHIPPING TBD *2
DRAWING SET PRICE \$2,000 *3

*1. Site preparation, foundation, deck installation, site utilities, mechanical equipment, MEP connections & landscaping to be additional. Pricing by local general contractor.

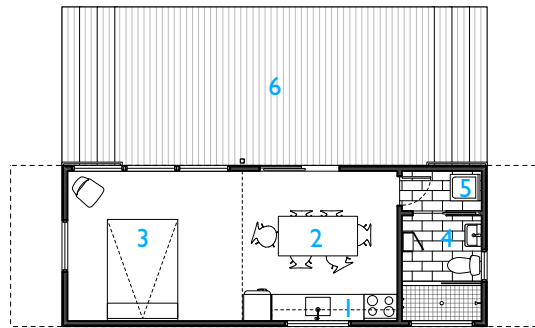
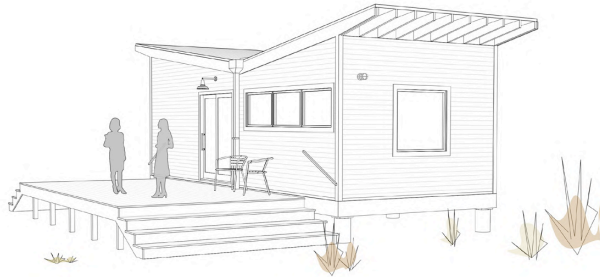
*2. Costs vary due to shipping distance and site accessibility.

*3. Estimated cost of drawing set needed for site construction.

Note: Alterations are available upon request



zFab 01 Butterfly



1. Kitchen 2. Dining 3. Living 4. Bathroom 5. Laundry 6. Deck

SQUARE FOOTAGE 384 sf [12'x32'] + 290 sf deck
CONSTRUCTION COST Quote Upon Request *1
SHIPPING TBD *2
DRAWING SET PRICE \$2,000 *3

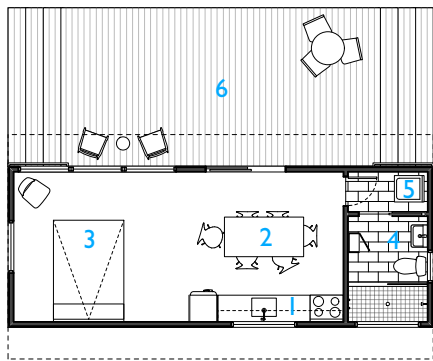
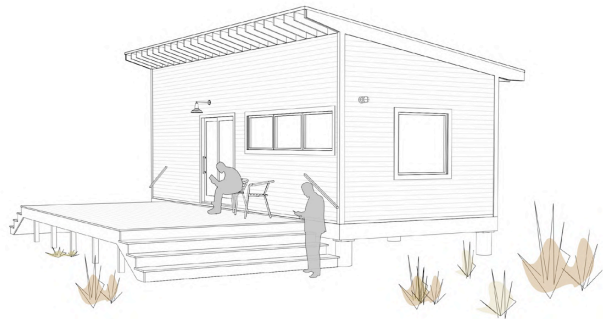
*1. Site preparation, foundation, deck installation, site utilities, mechanical equipment, MEP connections & landscaping to be additional. Pricing by local general contractor.

*2. Costs vary due to shipping distance and site accessibility.

*3. Estimated cost of drawing set needed for site construction.

Note: Alterations are available upon request





1. Kitchen 2. Dining 3. Living 4. Bathroom 5. Laundry 6. Deck

SQUARE FOOTAGE 384 sf [12'x32'] + 290 sf deck
RETAIL PRICE Quote Upon Request *1
SHIPPING TBD *2
DRAWING SET PRICE \$2,000 *3

*1. Site preparation, foundation, deck installation, site utilities, mechanical equipment, MEP connections & landscaping to be additional. Pricing by local general contractor.

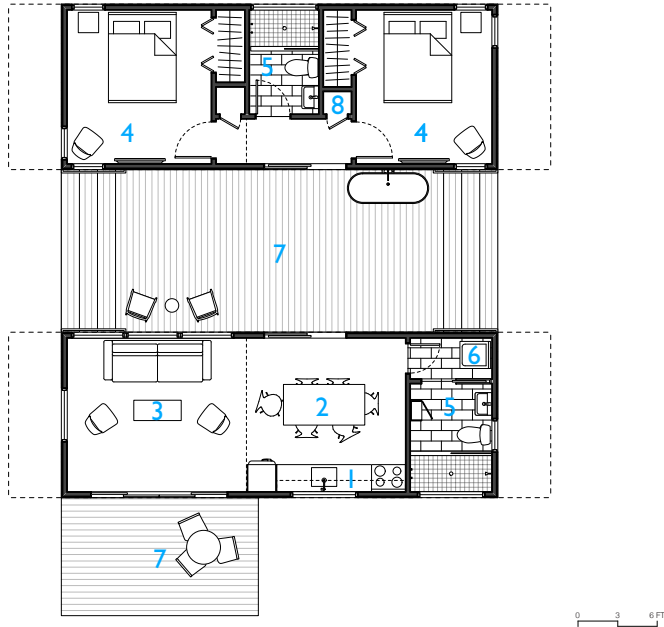
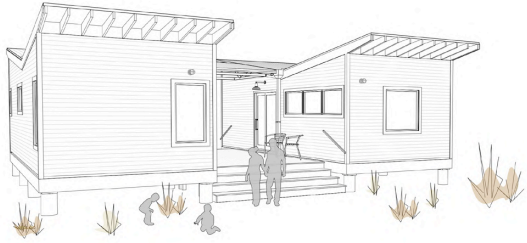
*2. Costs vary due to shipping distance and site accessibility.

*3. Estimated cost of drawing set needed for site construction.

Note: Alterations are available upon request



zFab 01 Double Butterfly



1. Kitchen 2. Dining 3. Living 4. Bedroom 5. Bathroom 6. Laundry 7. Deck 8. Mechanical

SQUARE FOOTAGE	2 x 384 sf [12'x32'] + 290 sf deck
RETAIL PRICE	Quote Upon Request *1
SHIPPING	TBD *2
DRAWING SET PRICE	\$3,000 *3

*1. Site preparation, foundation, deck installation, site utilities, mechanical equipment, MEP connections & landscaping to be additional. Pricing by local general contractor.

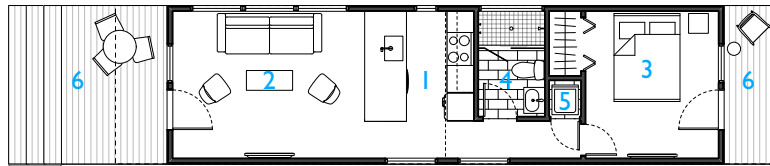
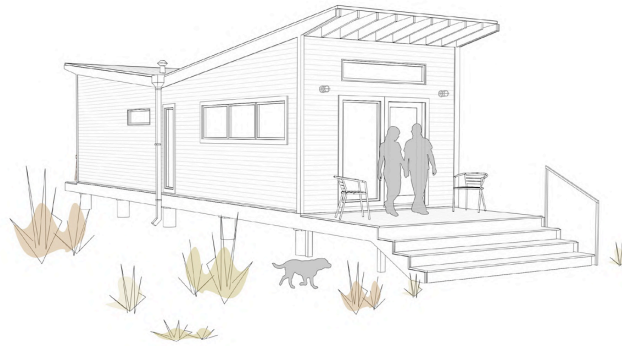
*2. Costs vary due to shipping distance and site accessibility.

*3. Estimated cost of drawing set needed for site construction.

Note: Alterations are available upon request



zFab 02 Butterfly



0 3 6 FT

1. Kitchen 2. Living 3. Bedroom 4. Bathroom 5. Laundry 6. Deck

SQUARE FOOTAGE 504 sf [12'x42'] + 141 sf deck
RETAIL PRICE Quote Upon Request *1
SHIPPING TBD *2
DRAWING SET PRICE \$2,500 *3

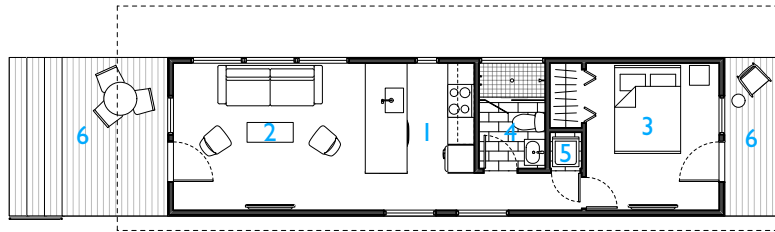
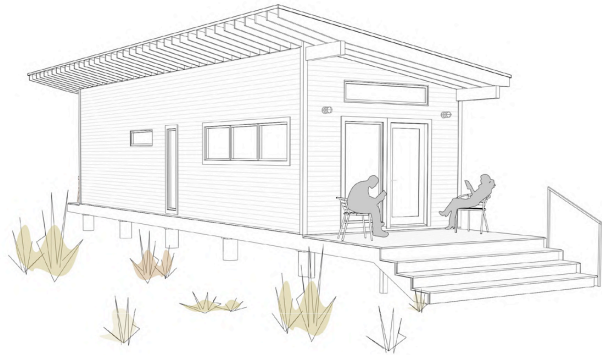
*1. Site preparation, foundation, deck installation, site utilities, mechanical equipment, MEP connections & landscaping to be additional. Pricing by local general contractor.

*2. Costs vary due to shipping distance and site accessibility.

*3. Estimated cost of drawing set needed for site construction.

Note: Alterations are available upon request





0 3 6 FT

1. Kitchen 2. Living 3. Bedroom 4. Bathroom 5. Laundry 6. Deck

SQUARE FOOTAGE 504 sf [12'x42'] + 141 sf deck
RETAIL PRICE Quote Upon Request *1
SHIPPING TBD *2
DRAWING SET PRICE \$2,500 *3

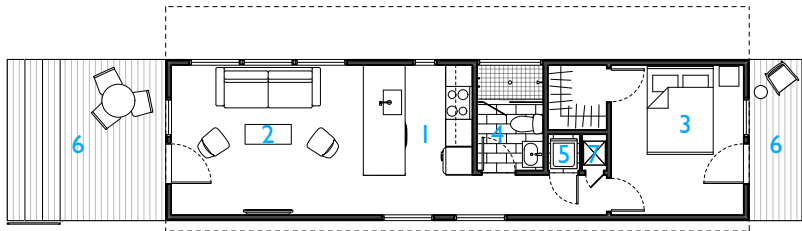
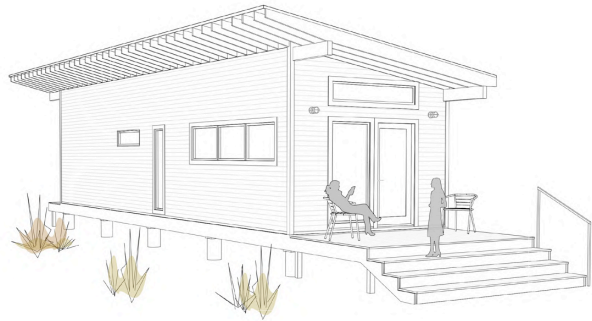
*1. Site preparation, foundation, deck installation, site utilities, mechanical equipment, MEP connections & landscaping to be additional. Pricing by local general contractor.

*2. Costs vary due to shipping distance and site accessibility.

*3. Estimated cost of drawing set needed for site construction.

Note: Alterations are available upon request





1. Kitchen 2. Living 3. Bedroom 4. Bathroom 5. Laundry 6. Deck 7. Mechanical

SQUARE FOOTAGE 528 sf [12'x44'] + 141 sf deck
RETAIL PRICE Quote Upon Request *1
SHIPPING TBD *2
DRAWING SET PRICE \$2,500 *3

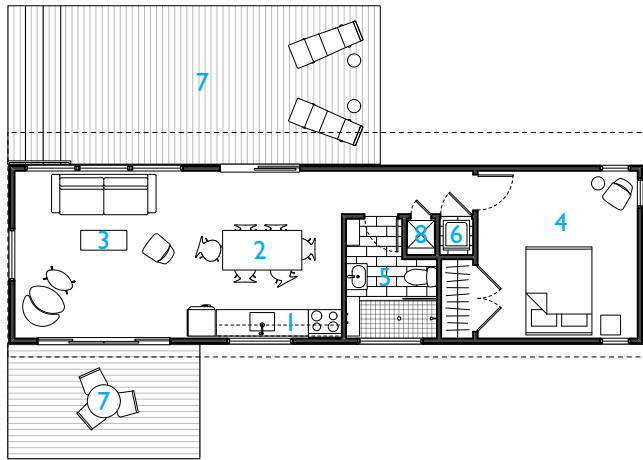
*1. Site preparation, foundation, deck installation, site utilities, mechanical equipment, MEP connections & landscaping to be additional. Pricing by local general contractor.

*2. Costs vary due to shipping distance and site accessibility.

*3. Estimated cost of drawing set needed for site construction.

Note: Alterations are available upon request





0 3 6 FT

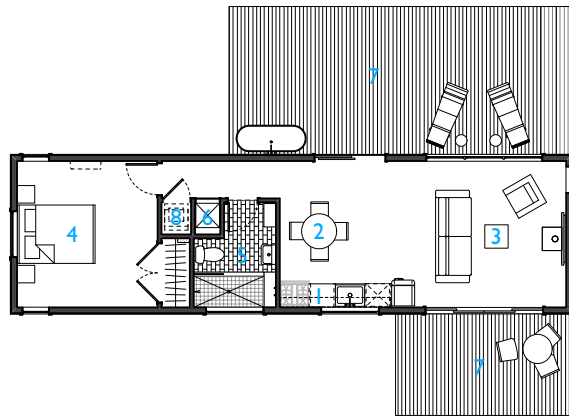
1. Kitchen 2. Dining 3. Living 4. Bedroom 5. Bathroom 6. Laundry 7. Deck 8. Mechanical

SQUARE FOOTAGE 648 sf [14'x48'] + 412 sf deck
RETAIL PRICE Quote Upon Request *1
SHIPPING TBD *2
DRAWING SET PRICE \$2,500 *3

*1. Site preparation, foundation, deck installation, site utilities, mechanical equipment, MEP connections & landscaping to be additional. Pricing by local general contractor.
 *2. Costs vary due to shipping distance and site accessibility.
 *3. Estimated cost of drawing set needed for site construction.
 Note: Alterations are available upon request



zFab 04Shed - Metal



0 3 6 FT

1. Kitchen 2. Dining 3. Living 4. Bedroom 5. Bathroom 6. Laundry 7. Deck 8. Mechanical

SQUARE FOOTAGE 648 sf [14'x48'] + 504 sf deck
RETAIL PRICE Quote Upon Request *1
SHIPPING TBD *2
DRAWING SET PRICE \$2,500 *3

*1. Site preparation, foundation, deck installation, site utilities, mechanical equipment, MEP connections & landscaping to be additional. Pricing by local general contractor.

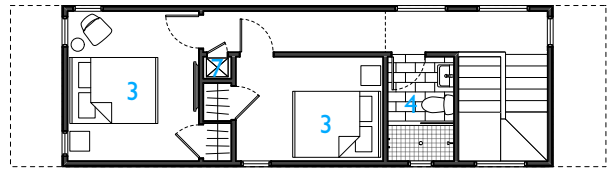
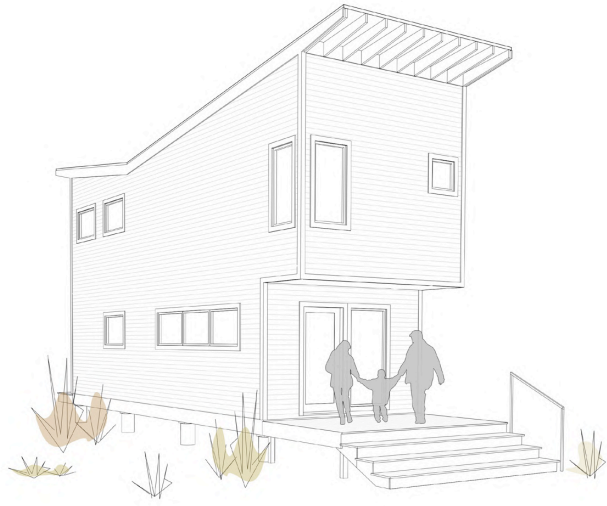
*2. Costs vary due to shipping distance and site accessibility.

*3. Estimated cost of drawing set needed for site construction.

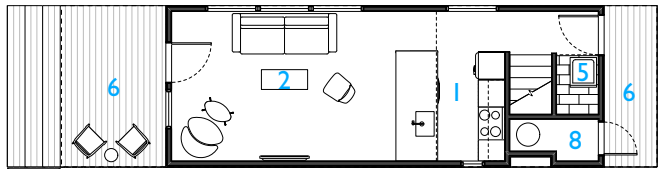
Note: Alterations are available upon request



zFab 05 Butterfly



Second Floor



First Floor



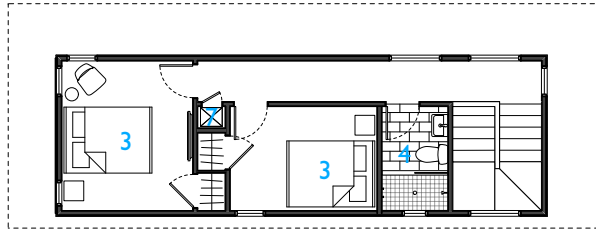
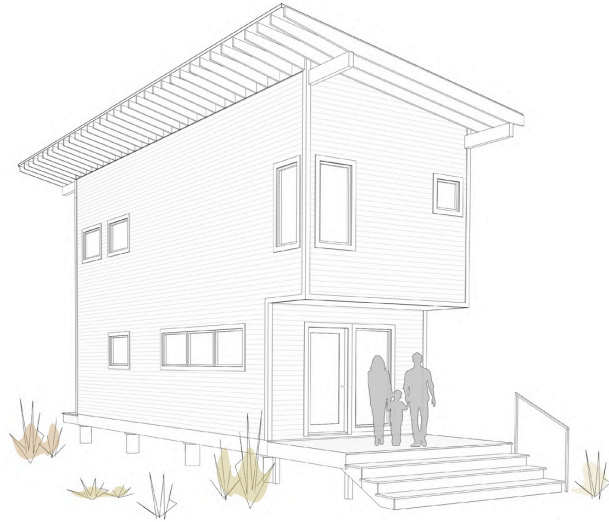
- 1. Kitchen 2. Living 3. Bedroom 4. Bathroom 5. Laundry 6. Deck 7. Mechanical
- 8. Storage / Water Heater

SQUARE FOOTAGE	737 sf [12'x37'] + 147 sf deck
RETAIL PRICE	Quote Upon Request *1
SHIPPING	TBD *2
DRAWING SET PRICE	\$3,000 *3

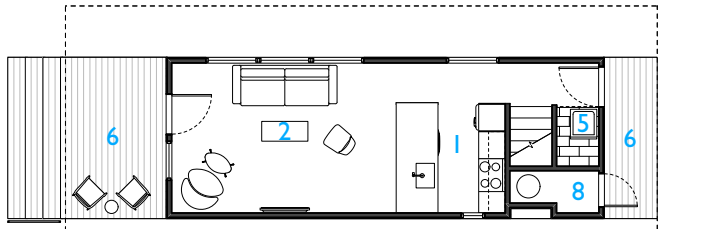
*1. Site preparation, foundation, deck installation, site utilities, mechanical equipment, MEP connections & landscaping to be additional. Pricing by local general contractor.
 *2. Costs vary due to shipping distance and site accessibility.
 *3. Estimated cost of drawing set needed for site construction.
 Note: Alterations are available upon request



zFab 05Shed



Second Floor



First Floor

0 3 6 FT

- 1. Kitchen 2. Living 3. Bedroom 4. Bathroom 5. Laundry 6. Deck 7. Mechanical
- 8. Storage / Water Heater

SQUARE FOOTAGE 737 sf [12'x37'] + 417 sf deck
RETAIL PRICE Quote Upon Request *1
SHIPPING TBD *2
DRAWING SET PRICE \$3,000 *3

*1. Site preparation, foundation, deck installation, site utilities, mechanical equipment, MEP connections & landscaping to be additional. Pricing by local general contractor.
 *2. Costs vary due to shipping distance and site accessibility.
 *3. Estimated cost of drawing set needed for site construction.
 Note: Alterations are available upon request



“A sustainable building, or green building is an outcome of a design philosophy which focuses on increasing the efficiency of resource use—energy, water, and materials—while reducing building impacts on human health and the environment during the building’s lifecycle, through better siting, design, construction, operation, maintenance, and removal.”

—Anne Freji of the Urban Land Institute

WHICH MODEL WILL YOU CHOOSE?



P 713 623 1926
E office@brettzamoredesign.com

BRETTZAMOREDESIGN.COM





BRETT ZAMORE DESIGN

BRETTZAMOREDESIGN.COM