



KITS





SUSTAINABLE  
AFFORDABLE  
PRACTICAL  
ALL IN ONE PACKAGE

Starting from the simplicity of a vernacular architecture, zKits incorporate good design, sustainability and cost effectiveness.

We sell 7 basic home plans that keep architectural fees to a minimum and construction costs in control to meet your budget per your location and finishes you choose. The modular designs are easily customized and/or reconfigured depending on one's needs and lifestyle.

zKits utilize off-the-shelf components that provide high-design, affordability, customization, and energy efficiency in an easy, hassle free solution. bZD can work with clients at customizing the home's finishes in order to meet design and budget requirements.

A combination of clever design and simplicity in construction allows the contractor to build the home in a fraction of time, compared to a conventional home.

KIT  
**11**  
PLANS

ASSEMBLED  
IN A  
FRACTION  
OF THE  
TIME

KEEPS  
ARCHITECTURAL  
AND  
CONSTRUCTION  
COSTS  
TO A  
MINIMUM

## THE zKit HOME DELIVERY MODEL



**STEP 1**  
Gather information on your property or find a site.



**STEP 2**  
Choose your plan. Contact bZD for pricing and purchasing.\*<sup>1</sup>



**STEP 3**  
Financing for your zKit: The zKit is a "site built" home and is not a prefab.



**STEP 4**  
Choose materials and finishes.\*<sup>2</sup>



**STEP 5**  
Find a local Engineer. Foundation design may require a soil test.\*<sup>3</sup>



**STEP 6**  
Find a General Contractor.\*<sup>4</sup>



**STEP 7**  
Prepare drawings for permit if required by local jurisdiction.\*<sup>5</sup>



**STEP 8**  
Build your zKit.

<sup>1</sup> bZD can modify and customize any home plan. Contact bZD for hourly fees.

<sup>2</sup> bZD can work with you on specifying all finishes: flooring, tile, counters, cabinets, appliances, plumbing and electrical fixtures, accessories, door and cabinet hardware and paint colors.

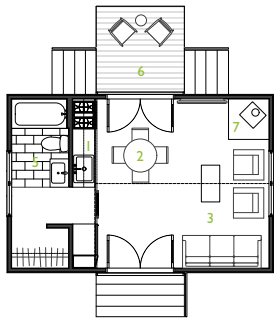
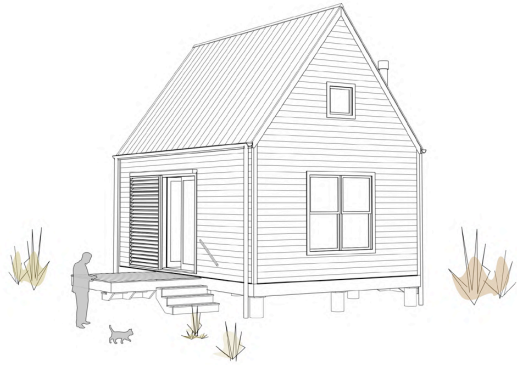
<sup>3</sup> bZD works with a licenced Structural Engineer or an Engineer of your choice.

<sup>4</sup> bZD can act as General Contractor in Houston, TX or help find a G.C.

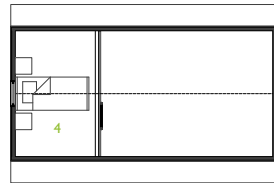
<sup>5</sup> bZD is a licensed Architect in TX. We can consult in the preparation of permit documents and coordinate with local engineer.



# Kit 00



First Floor



Second Floor



1. Kitchen 2. Dining 3. Living 4. Loft 5. Bathroom 6. Deck 7. Wood Stove (Optional)

<b>SQUARE FOOTAGE</b>	<b>384 sf [16'x24'] + 64 sf deck</b>
<b># OF BED/BATH</b>	<b>1/1</b>
<b>OPTIONAL FEATURES</b>	<b>Burning Stove, Shower or Tub</b>
<b>CONSTRUCTION COST</b>	<b>TBD *1</b>
<b>DRAWING SET PRICE</b>	<b>\$2,000 *2</b>

\*1. Costs vary due to shipping distance and site accessibility.

\*2. Estimated cost of drawing set needed for site construction.

Note: bZD can modify and customize any home plans, upon request.





# Kit 01



0 3 6 FT

1. Kitchen 2. Dining 3. Living 4. Bedroom / Office 5. Bathroom 6. Laundry 7. Deck

SQUARE FOOTAGE	865 sf [16'x56'] + 160 sf deck
# OF BED/BATH	2/1
OPTIONAL FEATURES	Side Deck, Shower or Tub
CONSTRUCTION COST	TBD *1
DRAWING SET PRICE	\$3,000 *2

\*1. Costs vary due to shipping distance and site accessibility.  
\*2. Estimated cost of drawing set needed for site construction.  
Note: Alterations are available upon request





# Kit 02



0 3 6 FT

- 1. Kitchen
- 2. Dining
- 3. Living
- 4. Bedroom / Office
- 5. Bathroom
- 6. Powder
- 7. Laundry
- 8. Deck

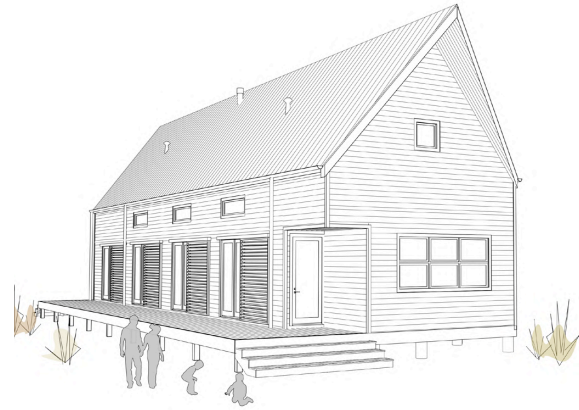
SQUARE FOOTAGE	1,184 sf [16'x72'] + 186 sf deck
# OF BED/BATH	2/1.5
OPTIONAL FEATURES	Side Deck, Shower or Tub
CONSTRUCTION COST	TBD *1
DRAWING SET PRICE	\$3,500 *2

\*1. Costs vary due to shipping distance and site accessibility.  
\*2. Estimated cost of drawing set needed for site construction.  
Note: Alterations are available upon request

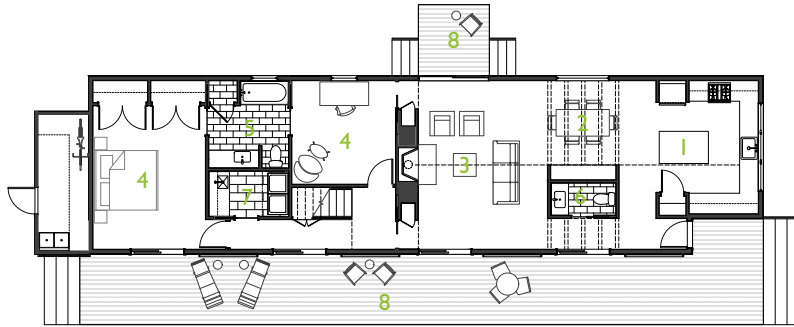




# Kit 03



Second Floor



First Floor

0 3 6 FT

1. Kitchen 2. Dining 3. Living 4. Bedroom / Office 5. Bathroom 6. Powder 7. Laundry  
8. Deck 9. Mechanical 10. Open to Below

<b>SQUARE FOOTAGE</b>	2,314 sf [24'x82'] + 294 sf deck
<b># OF BED/BATH</b>	3/2.5
<b>OPTIONAL FEATURES</b>	Side Deck, Storage Shed
<b>CONSTRUCTION COST</b>	TBD *1
<b>DRAWING SET PRICE</b>	\$4,000 *2

\*1. Costs vary due to shipping distance and site accessibility.  
\*2. Estimated cost of drawing set needed for site construction.  
Note: Alterations are available upon request





# Kit 04



First Floor

Second Floor

Third Floor



1. Kitchen 2. Dining 3. Living 4. Bedroom / Office 5. Bathroom 6. Powder 7. Laundry  
8. Deck 9. Mechanical / Storage

<b>SQUARE FOOTAGE</b>	2,314 sf [24'x52'] + 294 sf deck
<b># OF BED/BATH</b>	4/3.5
<b>OPTIONAL FEATURES</b>	Side Deck + Stair
<b>CONSTRUCTION COST</b>	TBD *1
<b>DRAWING SET PRICE</b>	\$4,500 *2

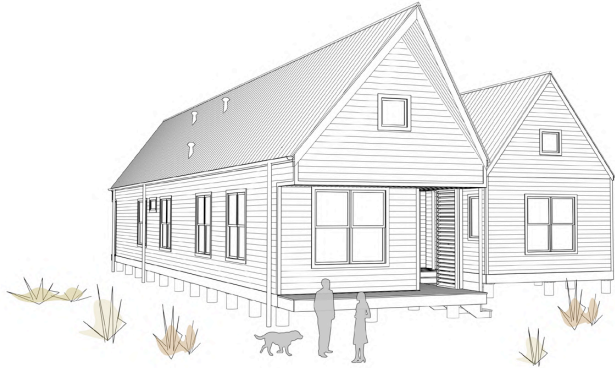
\*1. Costs vary due to shipping distance and site accessibility.

\*2. Estimated cost of drawing set needed for site construction.

Note: Alterations are available upon request



# Kit 05



0 3 6 FT

1. Kitchen 2. Dining 3. Living 4. Bedroom / Office 5. Bathroom 6. Laundry 7. Deck

<b>SQUARE FOOTAGE</b>	1,951 sf [44' x varies'] + 374 sf deck
<b># OF BED/BATH</b>	5/3
<b>OPTIONAL FEATURES</b>	Covered Side Deck
<b>CONSTRUCTION COST</b>	TBD *1
<b>DRAWING SET PRICE</b>	\$4,000 *2

\*1. Costs vary due to shipping distance and site accessibility.

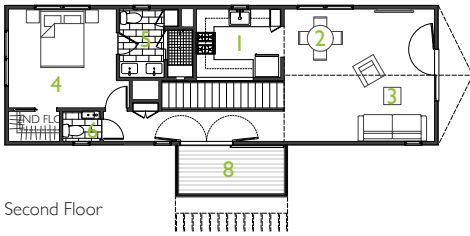
\*2. Estimated cost of drawing set needed for site construction.

Note: Alterations are available upon request

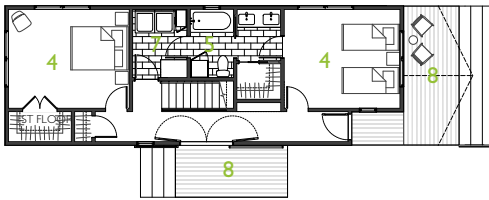




# Kit 06.1



Second Floor



First Floor

0 3 6 FT

1. Kitchen 2. Dining 3. Living 4. Bedroom / Office 5. Bathroom 6. Powder  
7. Laundry 8. Deck

<b>SQUARE FOOTAGE</b>	1,513 sf [44'x50'] + 293 sf deck
<b># OF BED/BATH</b>	3/2.5
<b>OPTIONAL FEATURES</b>	Powder Room, Covered Side Balcony
<b>CONSTRUCTION COST</b>	TBD *1
<b>DRAWING SET PRICE</b>	\$3,500 *2

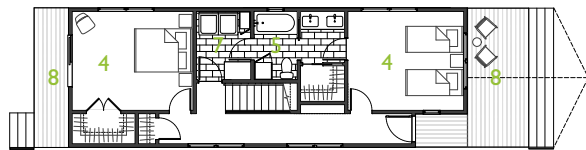
\*1. Costs vary due to shipping distance and site accessibility.  
\*2. Estimated cost of drawing set needed for site construction.  
Note: Alterations are available upon request



# Kit 06.2



Second Floor



First Floor

0 3 6 FT

1. Kitchen 2. Dining 3. Living 4. Bedroom / Office 5. Bathroom 6. Powder 7. Laundry  
8. Deck

SQUARE FOOTAGE	1,513 sf [44'x50'] + 293 sf deck
# OF BED/BATH	3/2.5
OPTIONAL FEATURES	Powder Room
CONSTRUCTION COST	TBD *1
DRAWING SET PRICE	\$3,500 *2

\*1. Costs vary due to shipping distance and site accessibility.

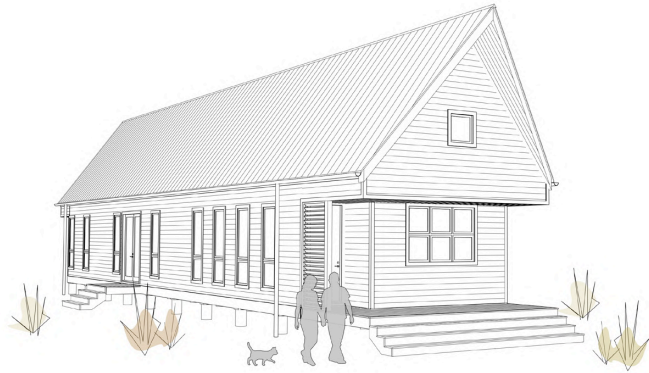
\*2. Estimated cost of drawing set needed for site construction.

Note: Alterations are available upon request





# Kit 07



0 3 6 FT

1. Kitchen 2. Dining 3. Living 4. Bedroom / Office 5. Bathroom 6. Laundry 7. Deck

**SQUARE FOOTAGE** 1,276 sf [18'x71'] + 153 sf deck  
**# OF BED/BATH** 3/2  
**OPTIONAL FEATURES** -  
**CONSTRUCTION COST** TBD \*1  
**DRAWING SET PRICE** \$3,500 \*2

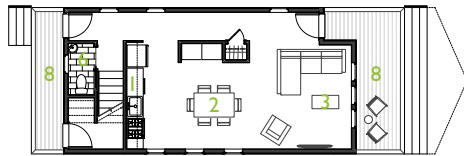
\*1. Costs vary due to shipping distance and site accessibility.  
\*2. Estimated cost of drawing set needed for site construction.  
Note: Alterations are available upon request



# Kit 08



Second Floor



First Floor

0 3 6 FT

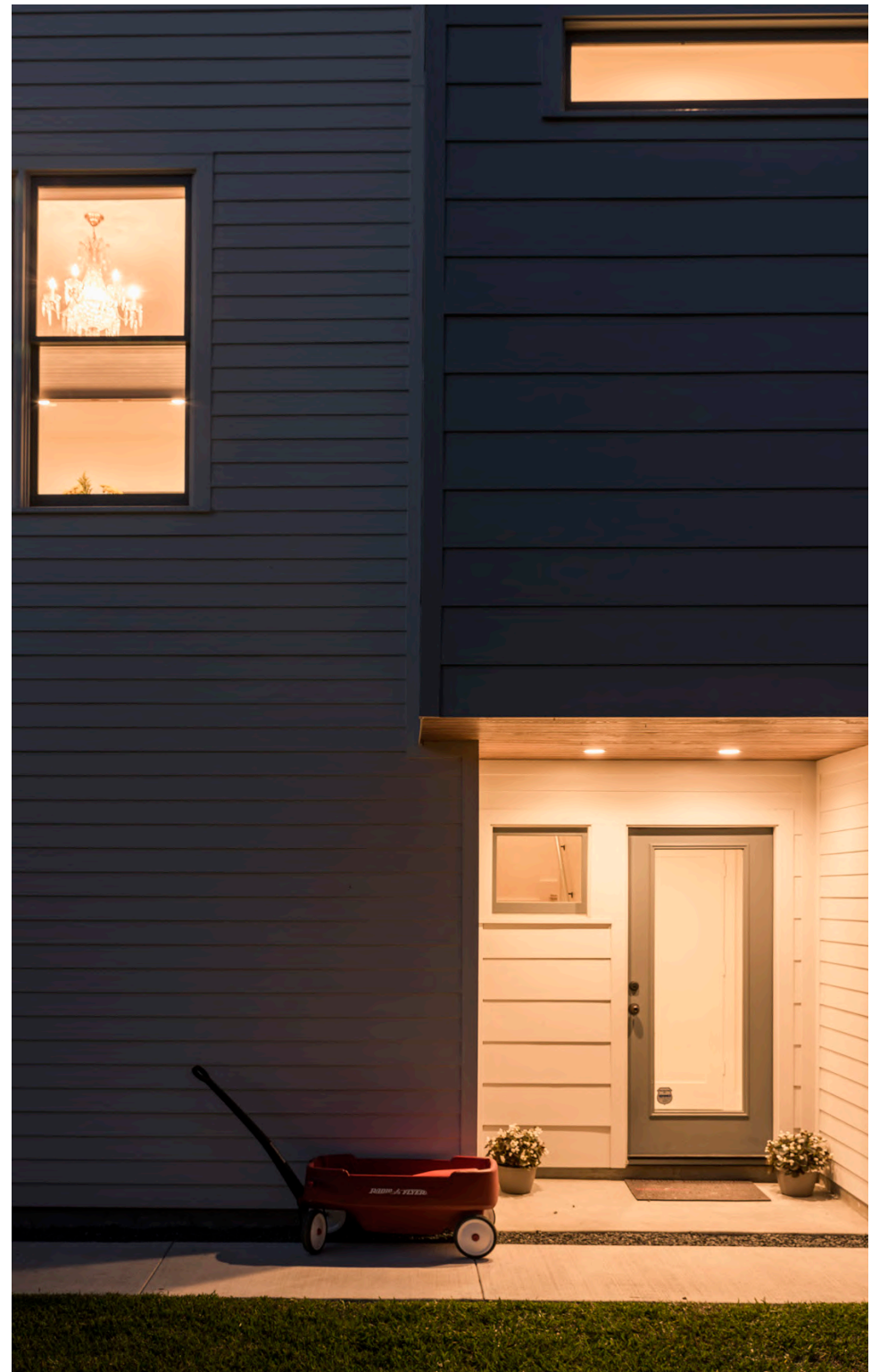
- 1. Kitchen
- 2. Dining
- 3. Living
- 4. Bedroom / Office
- 5. Bathroom
- 6. Powder
- 7. Laundry
- 8. Deck

SQUARE FOOTAGE	1,473 sf [18'x46'] + 199 sf deck
# OF BED/BATH	3/2.5
OPTIONAL FEATURES	Powder Room
CONSTRUCTION COST	TBD *1
DRAWING SET PRICE	\$3,500 *2

\*1. Costs vary due to shipping distance and site accessibility.

\*2. Estimated cost of drawing set needed for site construction.

Note: Alterations are available upon request

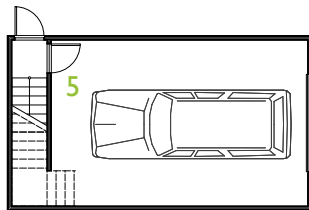




# Kit 09



Second Floor



First Floor



1. Kitchen 2. Dining 3. Living 4. Bathroom 5. Garage

<b>SQUARE FOOTAGE</b>	<b>448 sf [16'x28']</b>
<b># OF BED/BATH</b>	<b>1/1</b>
<b>OPTIONAL FEATURES</b>	<b>Wood Stove, Shower or Tub</b>
<b>CONSTRUCTION COST</b>	<b>TBD *1</b>
<b>DRAWING SET PRICE</b>	<b>\$2,000 *2</b>

\*1. Costs vary due to shipping distance and site accessibility.  
\*2. Estimated cost of drawing set needed for site construction.  
Note: Alterations are available upon request





“A sustainable building, or green building is an outcome of a design philosophy which focuses on increasing the efficiency of resource use—energy, water, and materials—while reducing building impacts on human health and the environment during the building’s lifecycle, through better siting, design, construction, operation, maintenance, and removal.”

—Anne Freji of the Urban Land Institute

## WHAT KIT WILL YOU CHOOSE?



P 713 623 1926

E [office@brettzamoredesign.com](mailto:office@brettzamoredesign.com)

[BRETZAMOREDESIGN.COM](http://BRETZAMOREDESIGN.COM)







BRETT ZAMORE DESIGN

[BRETTZAMOREDESIGN.COM](http://BRETTZAMOREDESIGN.COM)